

# CERTIFICATE OF LOCATION OF GOVERNMENT CORNER

NORTH QUARTER Corner of Section 12, Township 107, Range 39, 5TH P.M.

STATE OF MINNESOTA, County of MURRAY

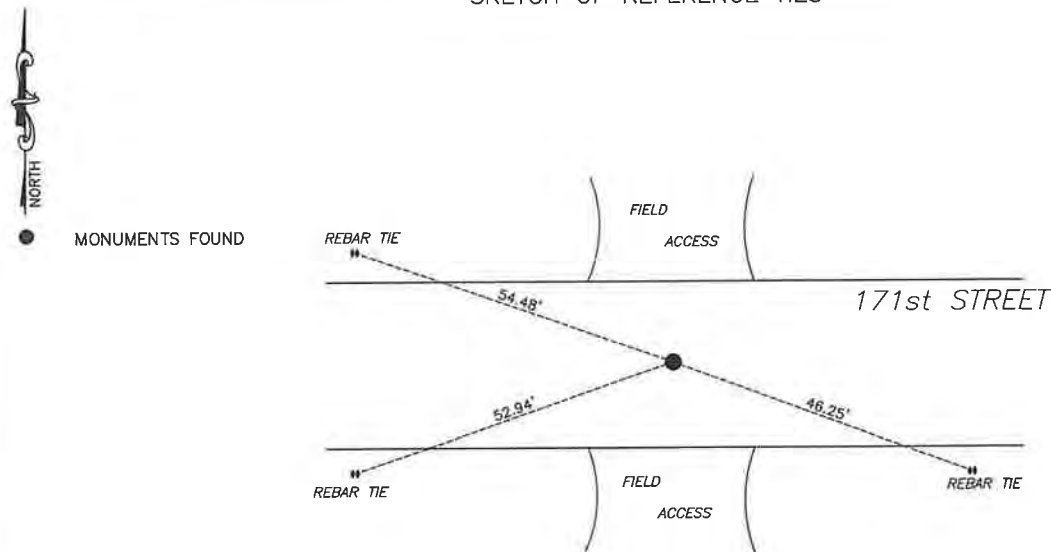
At the corner location shown on the sketch:

☒ On 4/3/2025 found a 1/2" iron with seal #12967  
DATE

☒ left monument as found, ☐ lowered monument, ☐ removed monument (explain)

☐ On \_\_\_\_\_ placed a \_\_\_\_\_  
DATE

## SKETCH OF REFERENCE TIES



Murray County  
Coordinate System NAD83 (1996)  
N: 189941.989  
E: 577330.536

WGS84  
LAT: 44°05'39.7916"  
LON: -95°28'20.4532"

Statement of evidence relative to this corner location is on back of page.

I hereby certify that this document and the data contained herein was prepared by me or under my direct supervision.

Daniel L. Bueltel  
License No. 43844

6/19/2025  
DATE

JUN 27 2025

MURRAY COUNTY RECORDER

### Statement of Evidence

#### NORTH QUARTER CORNER SECTION 12, T107N, R39W OF THE 5th P.M.

In July of 1861, J.W. Myers surveyed the township lines.

In September of 1861, L. Brockmann subdivided the township.

A survey by J.W. Woolstencroft dated October 12, 1899 notes a stake in Government Mound at the corner.

On August 19, 1980 Gary Martin, LS #12967, found a rotted hub above a field stone and placed a  $\frac{1}{2}$ " iron with seal #12967 over top of the stone.

County records dated May 26, 2016 show an iron pin with a survey cap with LS #12967.

On August 27, 2020 Westwood Professional Services found a  $\frac{1}{2}$ " iron with survey cap #12967.

On April 3, 2025 BuelteI-Moseng Land Surveying found a  $\frac{1}{2}$ " iron with seal #12967 at the corner.